

55 years of
excellence

Stability Studies

Walk in Stability Chamber



Stability Chamber



UPTO 60% POWER SAVING

• Walk-in Stability Chambers

Thermolab Stability testing chambers are designed to meet, if not exceed, stringent quality standards recognized internationally. Offering all temperature & relative humidity conditions specified in ICH guidelines as below:

- 25°C / 60% RH
- 30°C / 65% RH
- 30°C / 70% RH
- 30°C / 75% RH
- 40°C / 75% RH
- 25°C / 40% RH
- 30°C / 35% RH
- 40°C / NMT 25% RH

Thermolab provides a worldwide service network of trained engineers who can take care of calibration, validation, repairs & maintenance contract of chambers.



Standard Features

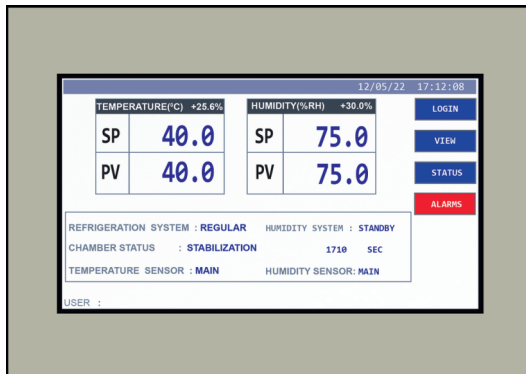
- Prefabricated modular structure with PUF / Rockwool insulated panels & reinforced floor panel.
- Interior Stainless Steel & Exterior PPGI / Stainless Steel.
- Adequate illumination inside the chamber.
- Glass view panel with specially designed leak proof door.
- Racks & trays made of Stainless Steel with adjustable tray heights.
- CFC free refrigeration systems.

Man, Machine, Product & Environment Safety

- Safety system to cut off the power supply in case of overshoot & undershoot of Temperature & Humidity conditions giving audio visual alarms.
- Additional safety thermostat to cut off the power supply in case of temperature overshoots.
- Low water level alarm for humidity system.
- Emergency push button inside the chamber to de-energise magnetic lock with respect to door access system.
- Panic switch inside the chamber with audible alarm outside.
- Manual unlocking mechanism for door from inside the walk-in chamber.
- Environment friendly processes & refrigerant used.

Hydronic Cooling System

- A unique chilled water circulation system which reduces the electrical cost by 60% & water cost by 90%.
- This unique design enables maintenance of optimum cooling coil temperatures depending on the chamber conditions & resultant Dew Point.
- Factory assembled refrigeration system, avoiding onsite piping work.
- The life of compressor increases as the running time of compressor has enormously decreased.
- Compact plug & play design & can be placed behind the chamber or in the technical area.



Control Panel

- Newly designed control panel as per international electrical safety standards.
- PLC based control system with 7" colour HMI & front mounted compact design.
- Country specific electrical panel design to comply with local electrical standards.
- Works on 110 / 220 / 440 Volts & 50 / 60 Hz.

Air Processing Unit (APU)

- Designed to achieve optimum energy utilization with uniform airflow condition.
- The airflow is designed to have uniform conditions throughout the chamber.
- Custom designed supply & return air ducts with sleek APU design.



Technical Specifications

Temperature Control Accuracy / Uniformity: $\pm 0.2^{\circ}\text{C}$ / $\pm 1^{\circ}\text{C}$

Humidity Control Accuracy / Uniformity: $\pm 2\%$ RH / $\pm 3\%$ RH

Documentation

Complete with IQ, OQ, PQ document, Operation & Maintenance manual.



Additional features

- Windows based SCADA software for data management having support for 21 CFR Part 11 compliance.
- 100% redundant refrigeration & humidity systems with automatic changeover.
- 8 point temperature & 8 point relative humidity monitoring sensors for online mapping.
- Standby temperature & humidity sensors.
- Printer interface & data storage facility.
- Email & mobile alert systems.
- Ethernet communication protocol.
- Door Access Security system.
- Remote audio visual alarm.

Capacities

Standalone Stability Chambers

90L, 200L, 400L, 500L, 800L, 1000L, 2000L & 3000 Litres.



Walk-in Stability Chambers

4000L, 8000L, 12500L, 18500L, 28000L, 36000L, 50000L up to 700,000 Litres.



Note: Other Walk-In sizes are available on request.

Low RH chambers can be specially designed as per user specifications

• Flameproof Chambers :

Rockwool Insulation, Spark Proof sensors, Flame Proof blower, Flame proof light fixtures, Smoke & Gas detector & other component required to make it a complete flame proof chamber.

Detailed technical specifications of Thermolab Flame proof chambers can be provided on request.



• Pharma Coldrooms For Stability Testing

Thermolab offers a wide range of cold rooms (2°C–8°C) for stability testing of drug substances as per ICH guidelines.

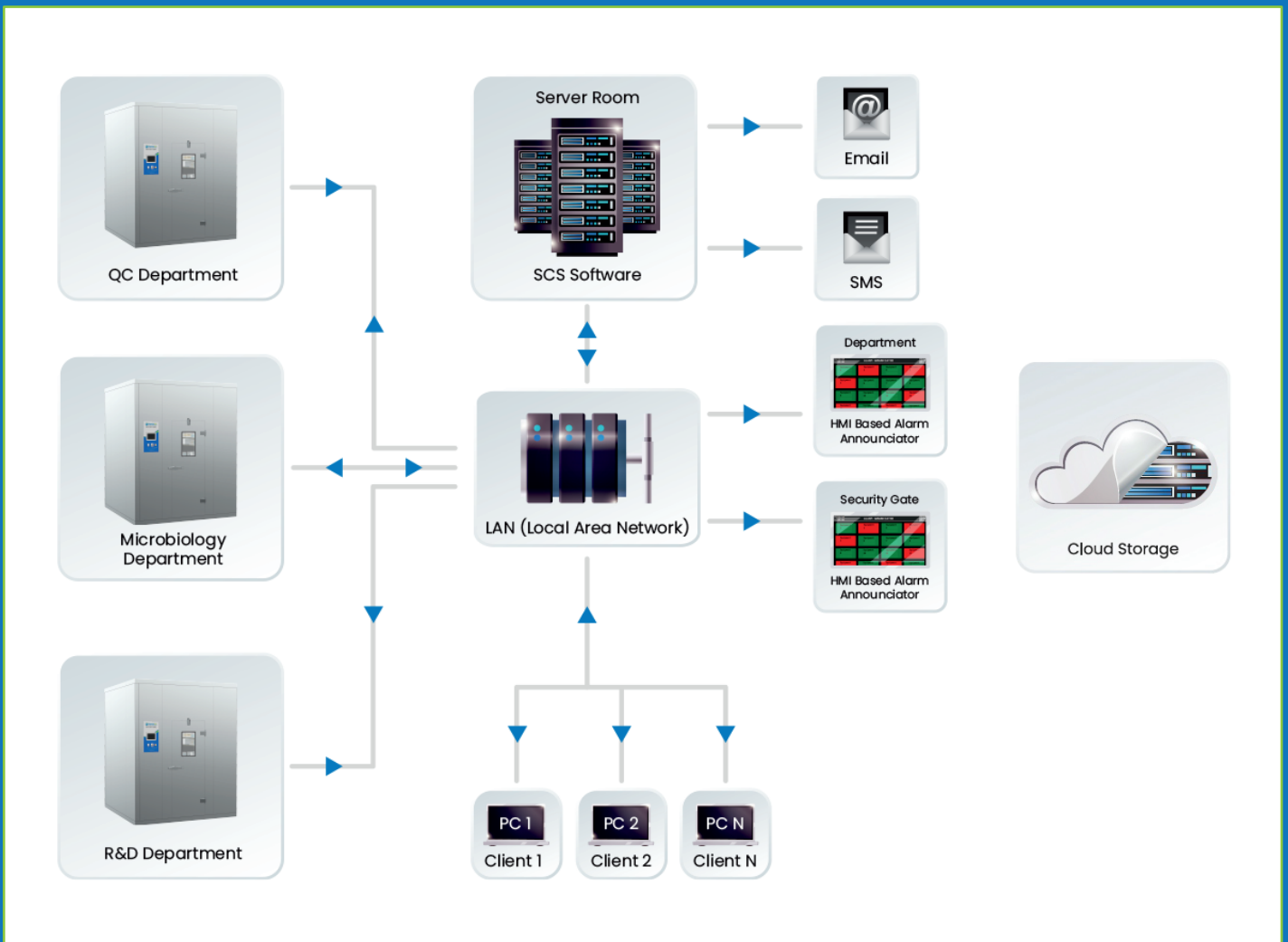
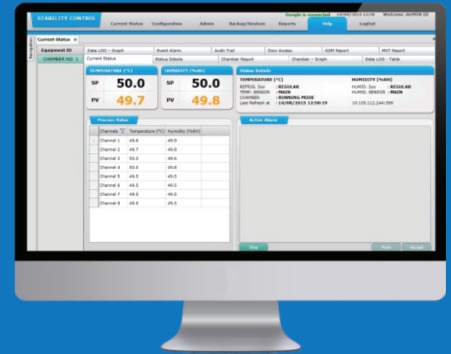
Standby refrigeration system, PLC control with automatic changeover, Data logging & software connectivity intended for storage of raw material & finished good storage.

• 21 CFR Part 11 Compliant Software

21 CFR Part 11 requires that all appropriate electronic records are attributable, legible, contemporaneous, original, & accurate & maintained with integrity. Our software guarantees just that.

Salient features:

- Third party validated software
- Complies with GAMP 5 category 4
- Guaranteed Data Integrity
- Password protection
- Audit trails
- Secured electronic records
- Electronic signature
- MKT calculations
- Alarm report
- Event logging report
- Door access report
- Auto Back-up & restore facility
- Complete with IQ, OQ, PQ documents.



• Global Presence In More Than 75+ Countries



Awards

- Award for Leaders in Sustainable Stability Chambers
For reducing electrical consumption by 60% & water consumption by 90%
- Best Innovation In Sustainability
- India Design Mark Award



Certifications & Approvals



Complete after sales service provided such as installation, calibration, validation, repairs, modification & annual maintenance contracts.



This NABL accredited laboratory is equipped to carry out on site calibration & validation of various parameters like temperature, relative humidity, pressure, vacuum, dimension etc.

Thermolab Scientific Equipments Pvt Ltd.

Corporate Office:

Plot No.19/20/40/41, Vasai Municipal Industrial Area, Umela Road, Vasai (West),
Dist. Palghar - 401 207, Maharashtra, INDIA.

(M) : +91 88888 08300 (T) : +91 - 250 - 2322164, 2321627, 2310912, 2321656, 2310325 (E) : solutions@thermolabgroup.com

www.thermolabscientific.com | www.thermolabgroup.com



Unit II



Unit I

"As part of our continuous improvement program, design specifications and photographs given in this brochure are subject to change without notice and without attracting obligations for pre modification to equipment previously sold"

