

Sterilizer – Premium Series



PREMIUM SERIES – FULLY AUTOMATIC

Application: • Labs • Institutes • Hospitals



Culture media & liquids



Plastics & metal objects



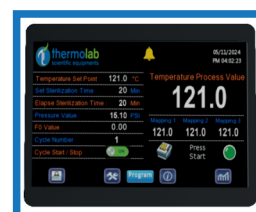
Glassware



Laboratory waste bags

Standard Features:

- Inside & Outside made of Stainless steel 304 with cuboidal body shape.
- Microprocessor based HMI 4.3" coloured touch screen display.
- Display of temperature sensor and pressure.
- Data logging of control sensor, pressure sensor and FO value.
- Analogue pressure gauge provided for online monitoring of pressure.
- Settable-Cycle Auto Start after Power Resume
- Guaranteed soak with settable hold band
- Automatic Purging and exhaust
- Auto discharge the cool air, & steam after sterilization.
- Automatic shut off of cycle after completion of sterilization period.
- 2 Nos, of stainless steel perforated basket with Lid
- Password protected user management software
- Castor wheels for easy movement
- Self-inflating type leak proof seal
- Digital display of working status
- Pre-programmed cycles
- **Radial wheel type mechanism for easy opening**



Safety Features:

- Spring loaded safety valve for over pressure.
- Door safety lock system-Pressure interlock.
- Temperature high & low Audio-visual alarms.
- Low Water Level indication on display.
- Password protected operation.
- MCS for electrical safety.

Optional Features:

- Data logging of Total 5 sensor.
- Printer Interface for Online Printing on 80 col Dot matrix Printer
- Software connectivity.

Technical Data:

Model	SP34050GR	SP34075GR	SP340100GR
Capacity	50 Liters	75 Liters	100 Liters
Working Pressure	0.22 Mpa / 0.23 Mpa.		
Control System	Coloured HMI 4.3" Touch Screen Display		
Printing	8000 records in printing memory of hardware last 8000 records in PC memory of hardware.		
Working Temperature / Accuracy	134°C / $\leq \pm 1^{\circ}\text{C}$		
Uniformity	$\pm 1^{\circ}\text{C}$		
Timer	1 to 999 minutes		
Accessories	2 Nos stainless steel perforated basket with lid.		
Power	3KW/220VAC/50Hz	4.5KW/220VAC/50Hz	4.5KW/220VAC/50Hz
Chamber Size (Internal)	Dia. 340 x 550 H (mm)	Dia. 400 x 600 H (mm)	Dia. 440 x 650 H (mm)
Overall Dimension (mm)	510 x 570 x 1130	560 x 660 x 1120	540 x 660 x 1250
Packing dimension (mm)	590 x 690 x 1280	650 x 730 x 1280	680 x 730 x 1370
Net Weight/ Gross Weight	68/88 kg	80/100 kg	85/110 kg

Global Presence In More than 85 Countries



Awards

- Award for Leaders in Sustainable Stability Chambers For reducing electrical consumption by 60% & water consumption by 90%
- Best Innovation In Sustainability
- India Design Mark Award



Complete after sales service provided such as installation, calibration, validation, repairs, modification & annual maintenance contracts.



This NABL accredited laboratory is equipped to carry out on site calibration & validation of various parameters like temperature, relative humidity, pressure, vacuum, dimension etc.

Thermolab Scientific Equipments Pvt Ltd.

Corporate Office:

Plot No.19/20/40/41, Vasai Municipal Industrial Area, Umela Road, Vasai (West),
Dist. Palghar - 401 207, Maharashtra, INDIA.

(M) : +91 88888 08300 (T) : +91 - 250 - 2322164, 2321627, 2310912, 2321656, 2310325 (E) : solutions@thermolabgroup.com

www.thermolabscientific.com | www.thermolabgroup.com



Unit II



Unit I



"As part of our continuous improvement program, design specifications and photographs given in this brochure are subject to change without notice and without attracting obligations for pre modification to equipment previously sold"